

Preparation required for Wifi Connection:

A 4G mobile phone and wireless router, reconnect the wireless router on the mobile phone WLAN interface, and record the WIFI password [need to be used when the thermostat is paired with the Wifi].

Note: Wifi from router must be 2.4G, 4G wifi from the other mobile phone hotspots is also ok, 5G router wifi is not ok.

WI-FI CONNECTION

Step 1 Download your APP

Scan following QR code and download APP through browser (Fig1-1) (Android also can search “Smart RM” at Google Play, iPhone also can search “Smart RM” at App Store) (Fig1-2)



Fig1-1



Fig1-2

Step 2 Register your account

- After install APP,click “register” (Fig 2-1)
- Please read the Privacy Policy and press Agree to proceed to the next step. (Fig 2-2)
- Registration account name uses your available Email Or mobile phone number, and please select Region, then click “Continue”(Fig 2-3)
- You will receive a 6-digit verification code from your email or SMS and enter your phone (Fig 2-4)
- Please set the account password, Password must contain 6-20 letters and numbers. click “Done”(Fig 2-5)

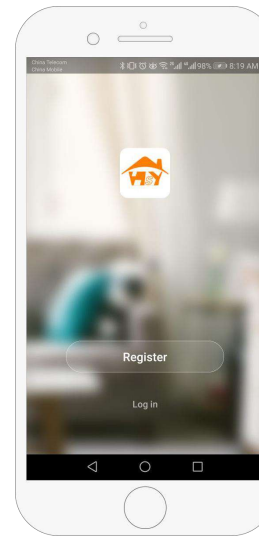


Fig 2-1

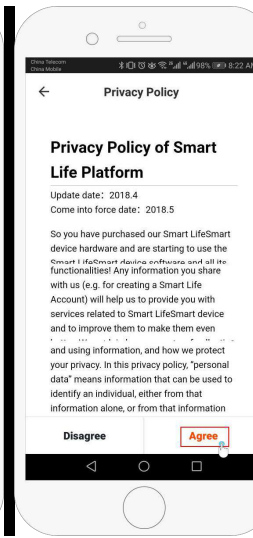


Fig 2-2

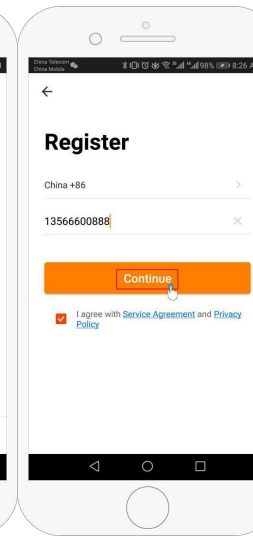


Fig 2-3

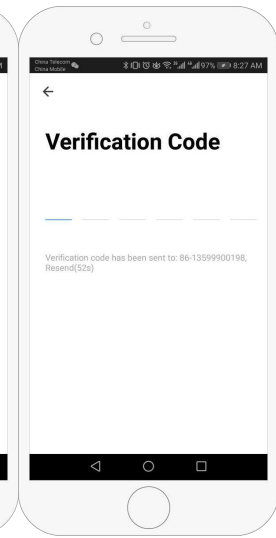


Fig 2-4

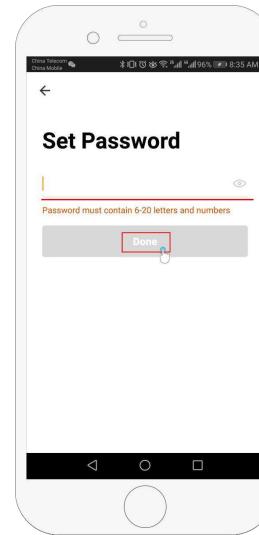


Fig 2-5

Step 3 Create family information(Fig 3-1)

- 1.Fill in the family name(Fig 3-2).
2. Select or add a room(Fig 3-2).
3. Set location (Fig 3-4)

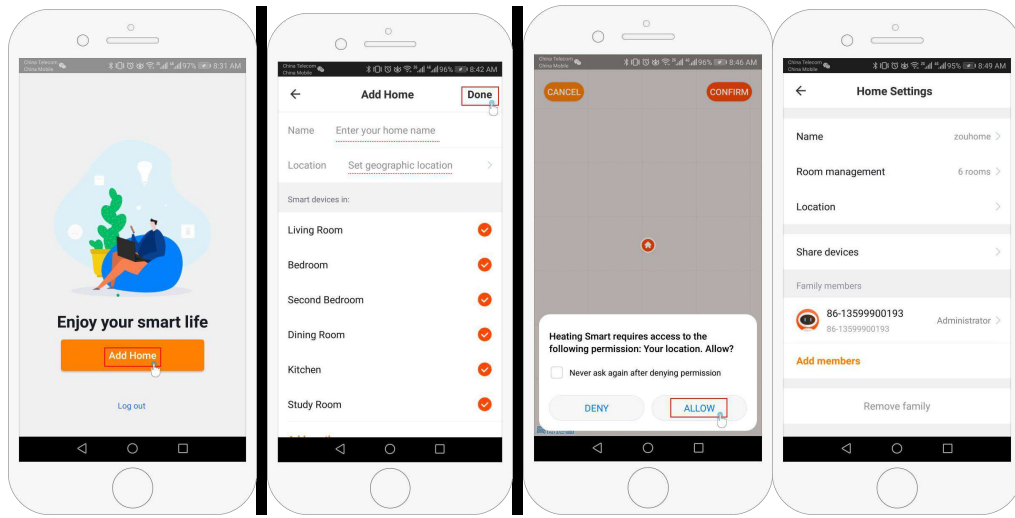


Fig 3-1

Fig 3-2

Fig3-3

Fig 3-4

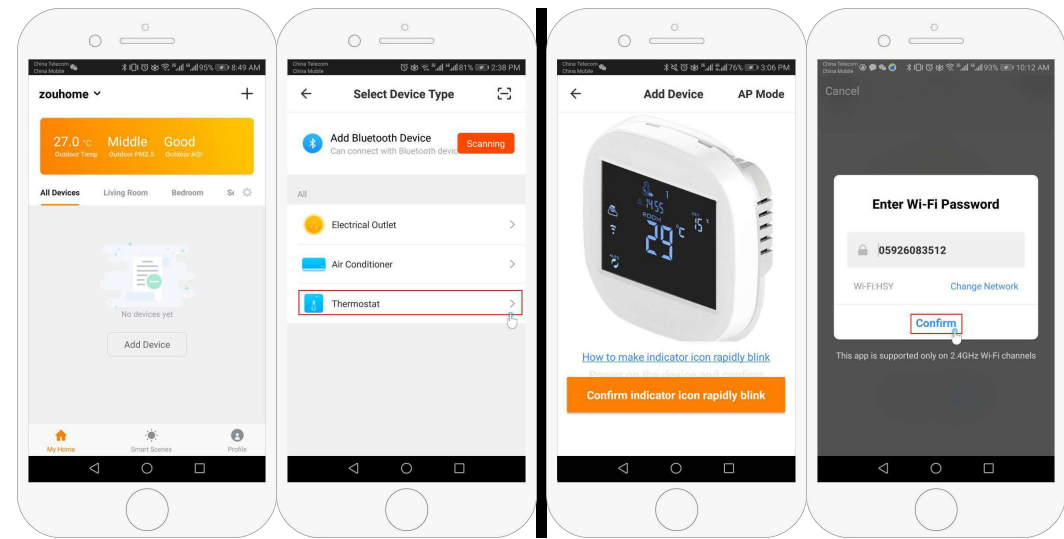


Fig 4-1

fig 4-2

fig 4-3

fig 4-4

Step 4 Connect your Wi-Fi signal

In the power-on state, press and hold the button and at the same time, the icon flashes to indicate the EZ distribution mode, the icon flashes to indicate the ap distribution mode, the icon indicates that the phone has been disconnected with the device.

Press "Add Device" or "+" in the upper right corner to add the device (Fig 4-1) and select the device type "Thermostat" (Fig 4-2)

On your thermostat

Click Confirm icon rapidly blink. then select your network and back to your app to enter the password of your wireless router (fig 4-4) and confirm.The app will connect automatically (Fig 4-5) This may typically take up to 5~90 seconds to complete. This is Ez mode which provides fast network connection between your app and your device.

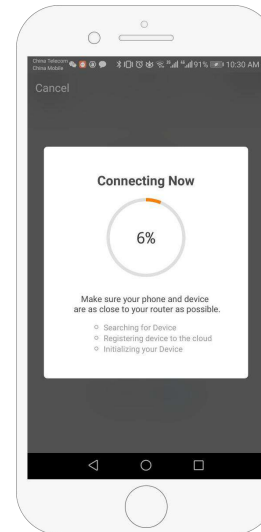


Fig 4-5

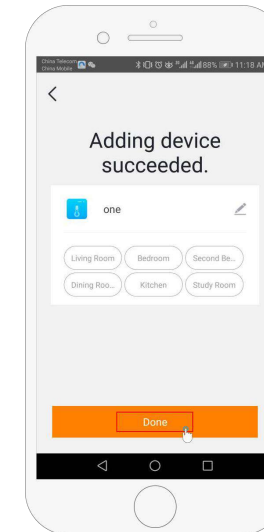


Fig 4-6

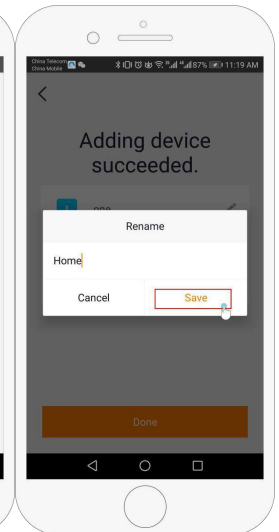


Fig 4-7

If your router doesn't support it or your wifi signal is weak or you can not connect by EZ mode, press the AP Mode on the upper right corner in (Fig 5-1) If you have connected your thermostat successfully, please ignore the ap setting as blow
On your thermostat
Click Confirm icon rapidly blink then select your network and back to your app to enter

the password of your wireless router (fig 4-4) and confirm.The app will go into the page in (Fig 5-2)

Press Connect now to select the wifi signal Smart life-XXXX of your thermostat (Fig 5-3)

Go back to your app and click Connect now then the app will connect automatically (Fig 4-5)

This may typically take up to 5~90 seconds to complete.

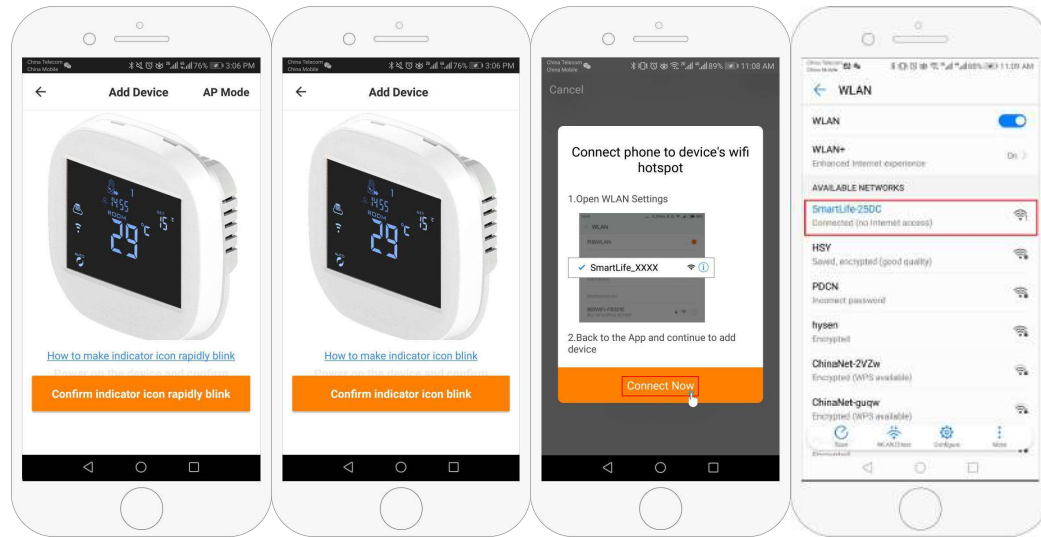


Fig 5-1

Fig 5-2

Fig 5-3

Fig 5-4

Your room name could be edited when the device is connected, And you can choose the corresponding room location. For example, bedroom, kitchen, living room, etc.

Step 5 APP Device interface operation and How to create a group

1. Power on/off button
2. Mode key: Manual mode, Auto mode, Holiday mode.
3. Child lock: After the child lock turned on, the APP cannot be operated.
4. Set key: After clicking on, you can select the programmed mode (5+2, 61, 7 days) and set the temperature and time for the six periods of the weekday and weekend.
5. Basic information page (Fig 6-1、 Fig6-2)

Device name: The device name can be modified according to your demand.

Device location:

Share device: Share the device to the mobile phone or email account of the registered family member

Create Group: Add all the devices which need to operate at the same time to the

created group for convenient operation.

Device information: Contains virtual ID; IP address; Mac address; Device time zone
Remove device: After deleting the device, you need to reconnect the network if you want to use it.

Third-party controls supported: amazon alexa/google assistant/IFTTT, click to enter, you will see the steps

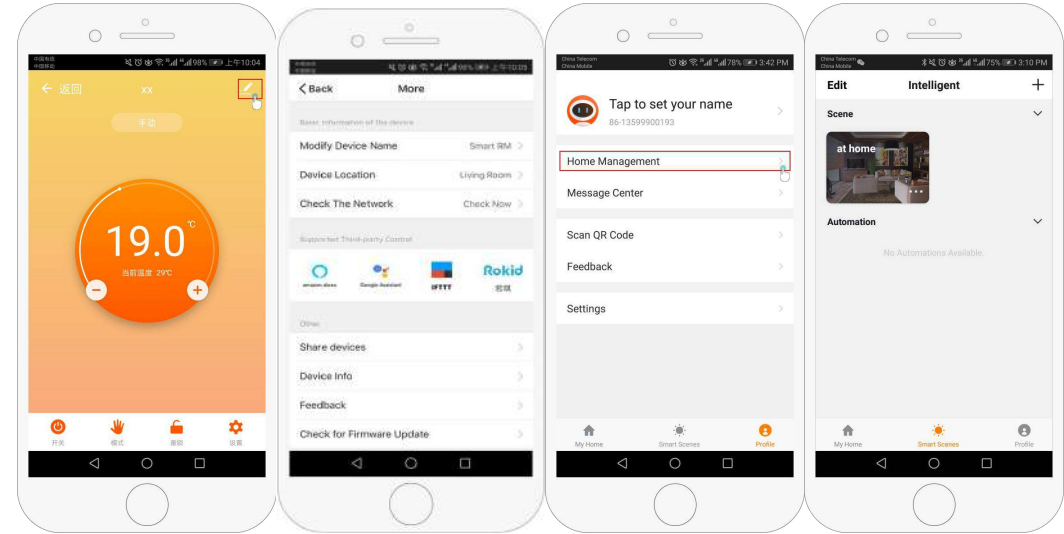


Fig 6-1

Fig6-2

Fig6-3

Fig6-4

Step 6 Family management (Fig6-3)

Add family: Family naming; family location setting; select room name, you can also add room name, upon completion, it will enter the Home Setting interface.

Step 7What is your Smart Scene and How to use it? (Fig6-4)

set your home to automatically turn on thermostat on when you back home(fig).Press + button into the setting

Step 1:You can set a condition for task like Temperature below 21 degree,then click save , (condition:temp.,Humidity,wether,PM2.5, Air Quality,Sunrise/Sunset,Device)

Step 2: Add a task. Press + to Select Device (Power,Set Temp,Lock Mode) to act, then Save.If you want to delete the scene,you can press Delete in the end.(fig)

NOTE: The room sound could be turned on/off in PROFILE-SETTING-SOUND. The sound is matched with the default of your system(fig)